

January - June 2017

Mission Gallery

Exhibitions, Events, Learning and Craft





1



2

Still by Anne Gibbs

21 January • 26 March

An exhibition in
The Language of Clay:
 A Mission Gallery National
 Touring exhibition
 Curated By Ceri Jones

2pm Saturday 21 January

Private View & Talk: Anne Gibbs
 in Conversation with Cath Roche

Anne Gibbs takes the time to stop and contemplate what she sees and experiences. She is minded to observe what often goes unnoticed, be it a tree on a hill we might see every season or a road junction we might pass everyday. Anne recognises the beauty in things and also acknowledges the pain, both often unexpected. Thus in her fine ceramic work we see calm delicacy often contrasted against rough, found objects. A metal pin might perforate a smooth surface, a sharp edge might be left on an object we could otherwise use.

Anne models and casts work in bone china, using a bright palette of colours. The sculptural ceramics she presents, sometimes in pairs and sometimes in large groups, are punctuated with objects she has collected. Anne's work maps her life journey so far and does so without presuming what we, as viewers, might see in it.

Still is a chance for us to share and celebrate a wonderful new body of work by Anne as it tours to venues across Wales. The exhibition is accompanied by a variety of engagement activities.



3

Cymer Anne yr amser i stopio, edrych a myfyrio ar yr hyn mae'n ei weld a phrofi. Mae'n gweld i arsylwi'r hyn sydd yn aml yn cael ei anwybyddu, boed yn goeden ar fryn gwnawn ei weld bob tymor neu gyffordd heol awn heibio bob dydd. Mae Anne yn adnabod y prydfwerthwch mewn pethau a chydabod y poen, y ddau'n aml yn annisgwyl. Yn ei gwaith serameg cain gwelwn freuder llonydd yn aml wedi ei gwrthgyferbynnu a gwrthrychau garw, darganfedig. Efallai gwnâi pin metel drywanu arwyneb llyfn, caiff ochr llym ei adael ar wrthrych a fyddai'n cael ei ddefnyddio heblaw am hynny.

Mae Anne yn modelu a chasio'r gwaith yn tsieni asgwrn, gan ddefnyddio palet lliw llachar. Mae'r serameg cerfluniol mae'n ei arddangos, weithiau mewn paru ac weithiau mewn grwpiau mawr, wedi eu hamharu gan wrthrychau mae wedi eu casglu. Mapia gwaith Anne taith ei bywyd hyd yn hyn ac mae'n gwneud hyn heb dybio ar beth welwn ni, y gwylwyr, ynndd.

Cyfle i ni rannu a dathlu corff newydd o waith gan Anne yw Llonydd fel teithia i leoliadau ar draws Cymru. Mae'r arddangosfa yn cynnwys amrywiaeth o weithgareddau cyfrannu.

Touring Schedule

Mission Gallery

21 January - 26 March 2017

Ruthin Craft Centre

22 July - 24 September 2017

Ceramic Gallery (Aberystwyth)

8 April - Mid June 2017

Llantarnam Grange Arts Centre

7 October - 18 November 2017

Photography

1: Chris Stock

2 & 3: Dewi Tannatt Lloyd



Often referencing aspects of ritual, ceremony and adornment, Kate's work explores our relationship with objects. Material and process is combined to create a non-verbal dialogue. Visual clues are generated from specific combinations of colour, form and scale.

Yn aml yn cyfeirio at agweddau o ddefod, seremoni ac addurniad, archwilia gwaith Kate ein perthynas gyda gwrthrychau. Cyfunir defnydd a phroses i greu deialog heb eiriau. Caiff cliwiau gweledol eu generadu o gyfuniadau penodol o liw, ffurf a graddfa.

Maker in Focus

Kate Haywood

10 January • 19 February



the [...] space

Migrations

10 January • 19 February

Migrations bring international contemporary dance and installations to Wales. Alongside live performances, Migrations also run a project of Dance Films, in order to showcase some of the best dance shorts from around the world, a mix of seminal works from top directors and choreographers and some of the brightest prize-winning artists currently breaking onto the scene.

Daw Migrations a dawns a gosodwaith gyfoes rhyngwladol i Gymru. Wrth ochr perfformiadau byw, mae Migrations hefyd yn rhedeg prosiect o Ffilmiau Dawns, er mwyn arddangos rhai o oreuon ffilmiau byr dawns o ar draws y byd, cymysgedd o weithfeydd dylanwadol gan y cyfarwyddwyr a choreograffwyr gorau a rhai o'r artistiaid gwobrwyedig blaengar sydd yn torri trwyddo.



Sarah uses clay to generate abstract, mixed media, colour compositions which create interplay between two and three dimensions whilst seeking to evoke a fourth. She describes these compositions as abstract ceramic paintings in sculptural form, or 'objects as paintings' and 'paintings as objects.'

Defnyddia Sarah glai i eneradu cyfansoddiadau lliw abstract, aml gyfrwng sydd yn creu rhyngchwarau rhwng dau a tri dimensiwn wrth chwilio am bedwerydd. Disgrifia hi'r cyfansoddiadau yma fel peintiadau abstract serameg mewn ffurf gerfluniol, neu 'gwrthrychau fel peintiadau' a 'peintiadau fel gwrthrychau'.

Maker in Focus

Sarah Worgan

21 February • 2 April



the [...] space

Residency Outcomes

21 February • 2 April

A unique opportunity given to selected Art & Design Foundation students at Swansea College of Art UWTSO to experience, engage and respond to Swansea International Festival, a two-week city-wide celebration of music. They were asked to develop work in response to the Festival and these are the outcomes of that residency.

Cyfle unigryw i fyfyrwyr dethol Cwrs Celf a Dylunio Coleg Celf Abertawe UWTSO i brofi, chymysgu ac ymateb i Wyl Ryngwladol Abertawe, dathliad cerddoriaeth pythefnos ar hyd y ddinas. Fe ofynnwyd iddynt ddatblygu gwaith yn ymateb i'r Wyl a dyma ganlyniadau'r cyfnod preswyl.

Learning at Mission



Mission Gallery has exciting workshops that run throughout the year. The dedicated learning space enables knowledge, understanding and a love of contemporary visual art and craft to flourish.

Mae gan Oriel Mission gweithdai cyffrous sydd yn rhedeg trwy gydol y flwyddyn. Mae'r lle addysg ymrwymedig yn galluogi gwybodaeth, dealltwriaeth a chariad tuag at gelf a chrefft weledol gyfoes flodeuo.

Criw Celf 2017 Recruitment

Application deadline 3rd March

Mission Gallery is also extremely proud of its Criw Celf programme, available to Year 5 and 6 children who have shown a talent or special interest in art, from the Swansea or Neath Port Talbot area. Successful applicants will experience masterclasses led by professional artists, the results of which will be exhibited at the National Waterfront Museum. For further application information, please refer to the website.

Mae Oriel Mission hefyd yn falch iawn o'i raglen Criw Celf, ar gael i blant blynyddoedd 5 a 6 sydd wedi dangos talent neu ddiddordeb arbennig yng nghelf o ardaloedd Abertawe neu Gastell Nedd Port Talbot. Bydd ymgeiswyr llwyddiannus yn profi dosbarthiadau arbenigol wedi eu harwain gan artistiaid proffesiynol, gyda'r canlyniadau yn cael eu harddangos yn Amgueddfa Genedlaethol y Glannau. Am fwy o wybodaeth am ymgeisio, ewch i'n gwefan.

February Half Term Workshops

Tues 21 Feb • 11am - 2pm
Cast, Dip, Stitch & Stain. Pt 1

Ages 7+ • £8 per Workshop • £14 for Both

Embark on a journey to collect items to cast and dip using alginate and plaster. Apply these new skills to create unique small sculptures to work with at the next session. Please bring along any interesting shaped items that you may like to cast or dip. These items must not be too big or precious as the casting may ruin them.

Ewch ar daith i gasglu eitemau ar gyfer castio a dipio gan ddefnyddio alginate a phlaster. Defnyddiwch y sgiliau newydd yma i greu cerfluniau bach unigryw i weithio gydag yn y sesiwn nesaf. Dewch ag unrhyw eitemau siâp diddorol hoffech chi gastio neu dipio. Rhaid i'r eitemau yma ddim bod yn rhy fawr neu werthfawr gan gall y castio eu dinistrio.



Fri 24 Feb • 11am - 2pm
Cast, Dip, Stitch & Stain. Pt 2

Ages 7+ • £8 per Workshop • £14 for Both

Working from your cast and dipped pieces from Tuesday add thread and colour to complete your small sculpture, inspired by the Anne Gibbs exhibition.

Gan weithio gyda'r darnau castio a dipio o ddydd Mawrth ychwanegwch edau a lliw i gyflawni'ch cerflun bach, wedi ei ysbrydoli gan arddangosfa Anne Gibbs.

Thurs 23 Feb • 11am - 2pm
The Painting Challenge

Free Family Drop In Workshop

Taking inspiration from Anne Gibbs exhibition, come and take part in a giant collaborative painting. All children must be accompanied by an adult.

Gan gymryd ysbrydoliaeth o arddangosfa Anne Gibbs, dewch i gymryd rhan mewn peintiad enfawr cydweithredol. Rhaid i blant fod gyda rhiant.



Easter Workshops

Tues 11 Apr • 11am - 2pm Fabric Fish Workshop

Ages 7+ • £6

Design a fish template on paper and select fabric to suit your design. Learn how to transform this into a 3D shape ready to take for a swim around the gallery!

Dyluniwch batrymlun pysgodyn ar bapur a dewis ffabrig i siwtio'ch dyluniad. Dysgwch sut i drawsnewid hwn i siâp 3D yn barod i'w gymryd i nofio o amgylch yr oriel.

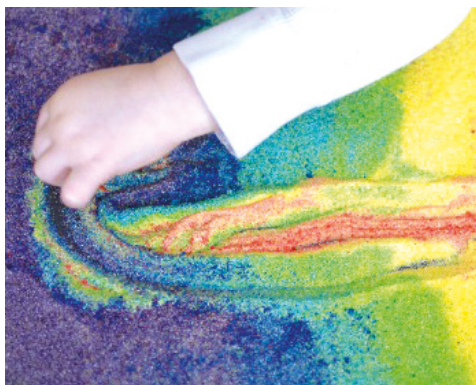


Fri 14 Apr • 11am - 2pm Rainbow Sand Art

Free Family Drop In Workshop

We have coloured sand! Come along and play- we may even share our secret recipe. All children must be accompanied by an adult.

Mae gennym ni dywod lliw! Dewch i chwarae - efallai gwnawn ni rannu'n rysâit cyfrinachol!! Rhaid i bob plentyn fod gyda rhiant.



Wed 12 Apr • 11am - 2pm Imaginative Islands

Ages 7+ • £6

If you could create your own island what would it look like? Using both digital drawing and craft techniques let your imagination run wild!

Os oeddech chi i greu ynys eich hun beth fyddai'n edrych fel? Gan ddefnyddio arlunio digidol a thechnegau crefft gadewch i'ch dychymyg fynd yn wyllt!

May Half Term Workshops

Tues 30 June • 11am - 2pm Water Colour Techniques

Ages 7+ • £6

Come and discover new ways to use water colour paints. This workshop will cover a range of exciting techniques, exploring resists, salts, cling film and marbling.

Dewch i ddarganfod ffyrdd newydd i ddefnyddio paent dyfrlliw. Bydd y gweithdy yma yn gorchuddio amrywiaeth o dechnegau cyffrous, gan archwilio gwrth sefyllwyr, halen, cling ffilm a marblïo.



Thurs 1 June • 11am - 2pm Tiny Lego Adventures

Ages 7+ • £6 • Please bring own camera

Combining Lego and craft materials, construct your own sea monster and sea rescue fleet. Set them off to rule the waves and see how your tiny sea farers fare.

Gan gyfuno Lego a deunyddiau crefft, adeiladwch eich anghenfil môr a llynges achub môr. Gadewch nhw'n rhydd i reoli'r tonnau a gweld sut fydd y morwyr yma'n goroesi.



Fri 2 June • 11am - 2pm Sand Sculptures

Free Family Workshop

Join us on the beach for the ultimate seaside activity. We will show you the 'hand pack' or 'casting bucket' process and you can then sculpt anything you like. There will be plenty of space so your sculptures can be as big or small as you can manage. All children must be accompanied by an adult. Meet at Mission Gallery.

Ymunwch a ni ar y traeth am y gweithgaredd arfordirol yma. Byddwn ni yn dangos i chi'r broses 'pacio llaw' neu 'castio bwced' ac yna fe allwch chi gerflunio unrhyw beth hoffech chi. Bydd yna ddigon o le felly gall eich cerfluniau fod mor fawr neu fach a gallwch ymdopi a. Rhaid i bob plentyn fod gyda rhiant. Cwrdd yn Oriel Mission.

Adult Workshops

Sat 25 Feb • 10am - 4pm
Jewellery Making

£22 • Ages 16+ • Mission Gallery

Based on creative thinking through jewellery, this workshop will explore concepts of the body and object. It will provide an insight into the design process of contemporary jewellery making using mixed media. Each participant will be supported by artist and designer **Anna Lewis** in creating their own individual piece.

Wedi ei selio ar feddwl yn greadigol trwy gemwaith, bydd y gweithdy yma yn archwilio cysyniadau'r corff a gwrthrych. Bydd yn darparu mewnwelediad i broses dylunio gemwaith cyfoes trwy ddefnyddio cyfrwng cymysg. Bydd pob cyfrannwr yn cael ei gefnogi gan yr artist a dylunwr **Anna Lewis** i greu ei darn unigryw.



Sat 8 & Sat 22 Apr • 10am - 4pm
My Coast in Clay

£50 • Ages 16+

This two part practical ceramics workshop is for any one with an interest in clay or the coast. Direction and support will be provided by artist and UWTSO ceramics technician **Daniel Butler**. Over the two days, participants will learn about clay, how to handle it and relevant construction methods in order to realise their ideas. Techniques such as base glaze application, trailing, masking, sgraffito and painting will be explored. All pieces will be fired and the finished items available for collection from the gallery. No prior experience of clay required.

Mae'r gweithdy ddau rhan ymarferol serameg yma ar gyfer unrhyw un gyda diddordeb yng nghlai neu'r arfordir. Darparir cyfeiriad a chefnogaeth gan yr artist a thechnegydd serameg UWTSO **Daniel Butler**. Dros y ddau ddiwrnod, bydd cyfranwyr yn dysgu am glai, sut i'w drafod a ffyrdd adeiladu penodol er mwyn sylweddoli'u syniadau. Fe archwilir technegau megis ychwanegu arlliw, teilio, masgio, sgraffito a pheintio. Bydd pob darn yn cael ei danio ac fe fydd y darnau terfynol ar gael i'w casglu o'r oriel. Nid oes angen profiad blaenorol o glai.

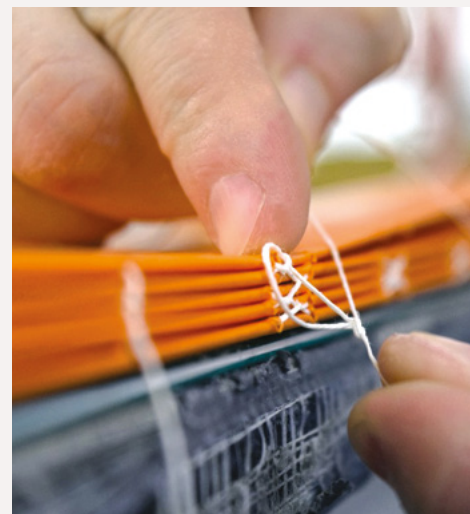
Adult Workshops

Sat 15 Apr • 10am - 4pm
Basketry

£22 • Ages 16+ • Mission Gallery

Using natural fibres such as grasses, straw and ropes, this workshop will explore various techniques - as well as looking at combining different qualities of the natural materials. Each participant will handcraft their own basket to take home. Led by artist **Louise Tucker**.

Gan ddefnyddio ffibrau naturiol megis gwafr, gwellt a rhaffau, bydd y gweithdy yma yn archwilio amrywiaeth o dechnegau - ynghyd ag edrych ar gyfuno ansawdd gwahanol y deunyddiau naturiol. Bydd pob cyfrannwr yn creu basged ei hun i'w gymryd gartref. I'w arwain gan **Louise Tucker**.



Sat 27 May • 10am - 4pm
Space & Architecture

£22 • Ages 16+ • Mission Gallery

Jason & Becky will look at increasing the significance of overlooked spaces within the city identified by participants. By mapping, drawing and re-imagining through text, their discoveries and interpretations will be combined to present a collective hidden narrative of Swansea.

Bydd Jason & Becky yn edrych ar arwyddocâd gwagleoedd sydd yn cael eu hanwybyddu o fewn y ddinas fel y dewisir gan gyfranwyr. Wrth fapio, arlunio ac ail-ddychmygu trwy ysgrifen, cyfunir eu darganfyddiadau a dehongliadau i gyflwyno naratif lluosog cudd am Abertawe.

Sat 3 Jun • 10am - 4pm
Bookbinding

£22 • Ages 16+ • Mission Gallery

Focusing on concertina and zig zag techniques, learn the art of book binding with artist **Angela Maddock**. Whether you're looking to learn a new skill or inform your own practice, this workshop is sure to sell out fast so make sure you don't miss out.

Gan ffocysu ar dechnegau concertina a zig zag, dysgwch sut i rwymo llyfr gyda'r artist **Angela Maddock**. Efallai eich bod am ddysgu sgil newydd neu gyfeirio'ch ymarfer chi, mae'r gweithdy yma yn siŵr o lenwi'n gyflym felly gwnewch yn siŵr na fyddwch yn colli mas.

Mission Shop



Tatty Devine

Discover beautifully designed and made work by talented artists and makers by visiting our Craft Retail Space, recently including our new collection of limited edition prints.

Darganfyddwch waith bendedig gan artistiaid a gwneuthurwyr talentog drwy ymweld â'n Lle Manwerthu Crefft, sydd wedi'n ddiweddar ychwanegu casgliad newydd o brintiau argraffiad cyfyngedig.

Mission @ Glynn Vivian

Glynn Vivian and Mission Gallery are working in partnership to showcase a number of specially selected works for the Glynn Vivian's new craft shop.

Mae'r Glynn Vivian ag Oriel Mission yn gweithio mewn partneriaeth i arddangos nifer o ddarnau crefft dethol yn siop newydd y Glynn Vivian.

Buy online at www.missionshop.co.uk

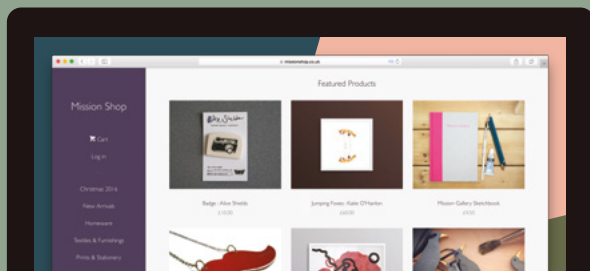


Image Above (Left to Right)
Sue Lane
Helen Chatterton
Melanie Tomlinson



Anne Morgan



Jack Laverick



Noodoll



Walter Keeler



Dates for the diary

25 January • Dydd Santes Dwynwen

10% off items purchased on 21 & 22 January*. Just quote 'St Dwynwen's Day' at the desk when buying.

14 February • Valentine's Day

10% off items purchased on 11 & 12 February*. Just quote 'St Valentine's Day' at the desk when buying.

26 March • Mother's Day

18 June • Father's Day

*Discount does not apply to magazines, books, vouchers, reduced or exhibition work and cannot be used in conjunction with any other discount.

Image Above (Left to Right): Tatty Devine • Claire Gaudion • Sue Lane

Mission is 40

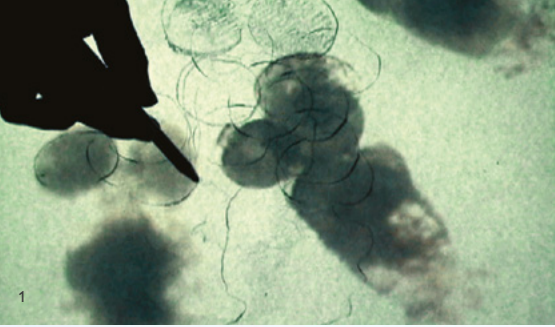
Founded in 1977 by a group of artists based in Swansea, Mission Gallery will celebrate its 40th Anniversary in July 2017. We are proud of our success and history, so want everyone involved to be a part of this important event.

Look out for more information and activities leading up to an exhibition, in which our current Staff and Board of Directors will be selecting their favourite Artists and Makers from the last four decades.

Mission yn 40

Wedi ei ffurfio yn 1977 gan grŵp o artistiaid wedi eu selio yn Abertawe, mi fydd Oriol Mission yn dathlu'i ben-blwydd 40 yng Ngorffennaf 2017. Rydym ni'n falch iawn o'n llwyddiant a'n hanes, felly rydym am i bawb sydd wedi bod yn rhan ohono fod yn rhan o'r digwyddiad pwysig yma.

Cadwch lygad allan am fwy o wybodaeth a gweithgareddau yn arwain i fyny i'r arddangosfa, lle bydd ein Staff presennol a Bwrdd Cyfarwyddwyr yn dewis eu hoff Artistiaid a Gwneuthurwyr o'r pedwar canrif diwethaf.



Ephemeral Coast links the bays of Swansea, Port Talbot and Carmarthen with coastal spaces internationally, including Mauritius, the USA, and Canada. Working with an array of artists, climate change scientists and writers from the humanities, the exhibition seeks to develop a nexus of understanding between art, empathy, and the degradation of the ocean.

A series of exhibitions will unfold across the region from early 2017 to Spring 2018, each addressing a different approach to imaging and imagining the demise of the ocean as witnessed through coastal visuality.

Cysyllta Ephemeral Coast bae Abertawe, Port Talbot a Chaerfyrddin gyda gwagleoedd arfordirol rhyngwladol, gan gynnwys Mauritius, yr UDA a Chanada. Gan weithio gydag amrywiaeth o artistiaid, gwyddonwyr newid hinsawdd ac ysgrifenyddwyr dynoliaeth, ceisia'r arddangosfa ddatblygu cysylltiad o ddeallusrwydd/doethineb rhwng celf, empathi, a diraddiad y cefnfor.

Bydd cyfres o arddangosfeydd yn datblygu ar draws yr ardal o 2017 cynnar i Wanwyn 2018, pob un yn cyfeirio at agwedd gwahanol o ddelweddu a dychmygu marwolaeth y cefnfor fel y gwelai trwy weledigaeth arfordirol.

Situation/Material/Ocean

Curated by Celina Jeffery • 8 April - 4 June

Annie Thibault
(Quebec, Canada)
& Gemma Copp
(Swansea, Wales)

Private View & Curators Talk
6pm Friday 7 April

Photography
1 & 2: Annie Thibault
3: Gemma Copp

'*Situation/Material/Ocean*' presents a series of studies that explore the perception and sensibility of coastal materiality.

Gemma Copp, a Welsh artist whose work is animated by the coast of Swansea, and Annie Thibault, a Canadian artist who frequently engages with the biology of aquatic life, present assemblages of fluid materiality and matter drawn from the sea and configured in series of studies. Both artists consider material forms in terms of their relationality: salt, algae, plastic, and seawater come together and begin to question and problematize distinctions. At times unexpected and ambiguous, these explorations of the micro and macro sensibilities of salt water encompass the ethics of environmental degradation: material waste, geological erosion, and the seemingly endless yearn to connect with non-human life. Placed together, the work of Copp and Thibault also situates these vastly differing coast lines into connection, creating hybrid configurations of aquatic life.

This research was supported by The Social Sciences and Humanities Research Council of Canada



Social Sciences and Humanities
Research Council of Canada

Conseil de recherches en
sciences humaines du Canada



Cyflwyno '*Sefyllfa/Defnydd/Môr*' gyfres o astudiaethau sydd yn archwilio canfyddiad a dealltwriaeth materoldeb arfordirol.

Mae Gemma Copp, artist Cymreig gyda gwaith sydd yn aml wedi ei animeiddio gan arfordir Abertawe, ac Annie Thibault, artist o Ganada sydd yn cyffwrdd ar fioleg bywyd dyfrol, yn cyflwyno casgliadau o fateroldeb llifol a defnydd o'r môr a'u cydffurfio mewn cyfres o astudiaethau. Mae'r ddau artist yn ystyried ffurfiau deunydd yn nhermau perthnasol: daw halen, gwymon, plastig, a dŵr môr at ei gilydd i gwestiynu a chanfod gwahaniaethau. Weithiau'n annisgwyl ac amwys, mae'r archwiliadau yma o synioldeb micro a macro dŵr halen yn cwmpasu moeseg diraddiad amgylcheddol: deunydd gwastraff, erydiad daearegol, a'r hiraethu enbyd i gysylltu gyda bywyd nad yw'n ddynol. Wrth leoli'r rhain gyda'i gilydd, mae gwaith Copp a Thibault hefyd yn lleoli'r llinellau arfordirol gwahanol yma i gysylltiad, gan greu cydffurfadau croesfrid o fywyd dyfrol.

Maker in Focus

Ann Jordan (Swansea, Wales)
4 April – 21 May 2017
Stuart Cairns (Belfast, Ireland)
23 May – 25 June 2017

the [...] space

Adele Vye (Swansea, Wales)
4 April – 21 May 2017
Lee Williams (Port Talbot, Wales)
23 May – 25 June
Daniel Trivedy (Neath, Wales)
27 June – 6 August 2017

Ephemeral Coast Exhibitions

Elysium Gallery, Swansea

8 April – 6 May 2017

Ephemeral Coast

Helen Dennis (New York, US)

Private View • 8pm Friday 7 April 2017

Oriel Myrddin, Carmarthen

20 May – 8 July 2017

Oceans: Surface/Below

Pam Longobardi (US) & Diana Heise (US)

Private View & Talk • 6pm Friday 19th May 2016.

With Pam Longobardi and Curator Celina Jeffery.

National Waterfront Museum, Swansea

9 Sept – 29 Oct • White Wall Gallery

Ephemeral Coast: A Response

Art & Design Foundation Staff from Swansea College of Art, UWTSU.

National Waterfront Museum, Swansea

5 August - 29 Oct 2017

Colonnade Gallery

The Jane Phillips Award

The Jane Phillips Curatorial & Exhibition Award 2017. *Ephemeral Coast* by Students of Swansea College of Art, UWTSU, curated by Jason & Becky (Swansea, Wales)

Glynn Vivian, Swansea

Forthcoming in 2017/18.

Dates tbc

Shiraz Bayjoo (Mauritius & UK)

Julia Davis (Australia)

Alex Duncan (Swansea & London)

Jaanika Peerna (New York & Estonia)



Mission Gallery is one of Wales' most inspirational spaces for the contemporary arts. Mission Gallery has developed a reputation for dynamic and distinctive programming, to present excellence across the visual arts, applied arts and craft, from across Wales and beyond.

Un o safleoedd gorau Cymru am gelf gyfoes yw Oriel Mission. Mae'r Oriel wedi datblygu enw da am rhaglen deinamig a gwahanredol, i gyflwyno arbennigwydd ar draws y byd celf gweledol, cymhwysol a chreffft, o Gymru ac ymhellach.

We are located on Swansea Marina near the City Centre, a 15 minute walk from Swansea Train Station and a 10 minute walk from Swansea's central bus station. Pay & display car parks are situated close by, with limited free 3 hour parking outside the gallery. Access is by one-step entry from pavement level through to our main entrance. There is level access throughout the gallery spaces, with education based on the first floor. A wheelchair ramp is also available on request.

Rydym ni wedi ein lleoli yn Marina Abertawe yn agos i ganol y ddinas, taith 15 munud ar droed o orsaf drennau Stryd Fawr Abertawe a 10 munud o orsaf fysiau Abertawe. Mae yna feysydd parcio talu ac arddangos yn agos, gyda peth parcio 3 awr am ddim tu allan i'r oriel. Mae yna un grîs o lefel y palmant trwy ein prif mynediad. Mae yna lawr lefel trwy gydol y gwagleoedd arddangos, gyda'r lle addysg ar y llawr cyntaf. Mae yna ramp cadair olwyn i gael ar ymofyn.

Mission Gallery
Gloucester Place • Swansea • SA1 1TY

01792 652016
nfo@missiongallery.co.uk
www.missiongallery.co.uk

Open 11am - 5pm Tuesday - Sunday
Closed Mondays • Open Bank Holidays

Open Good Friday, Easter Sunday and
Easter Monday

Cover: Dewi Tannatt Lloyd
Design: Matthew Otten • matthewotten.co.uk

Supported by:



Jane Phillips Award



elysiumgallery



Oriel Myrddin Gallery

“Anne Gibbs is artist as retriever, but also as provocateur, in her understated way pricking at our consciousness, making us think afresh about the fabric of our interior and exterior world.”

David Whiting

