

September - December 2015

# Mission Gallery

---

*One of Wales' best adapted spaces for contemporary art & craft.  
Exhibitions, Events, Learning & Craft.*



# Divisible Remainder • Ryan L. Moule

12 September – 8 November

---

## Exhibition

Private View  
7pm Friday 11 September

Opened by Rut Blees  
Luxemburg

In Conversation  
with Bella Kerr  
6pm Friday 2 October  
Free & All Welcome

—  
*Ryan L. Moule lives and works in  
Swansea. He trained at Swansea  
College of Art and Royal College  
of Art London (MA)*

—  
Divisible Remainder is  
the Jane Phillips Award  
Exhibition 2015; Mission  
Gallery's Swansea  
International Festival's  
Exhibition 2015 and  
coincides with Ffotogallery's  
Diffusion International  
Photography Festival, all of  
which take place in Swansea  
and Cardiff during  
October 2015.

Divisible Remainder brings together a new collection of  
works by the artist Ryan L. Moule.

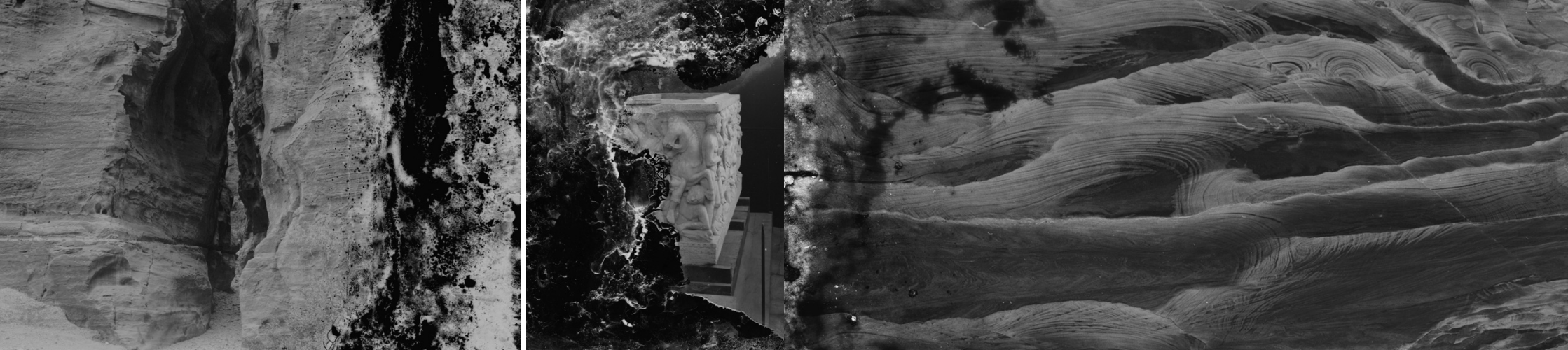
When Edward Snowden's hard drives were destroyed  
by the Editors of The Guardian newspaper, under the  
watchful eye of the British Government Spy Agency, the  
physical container of information was seen to be the  
source of leaked information.

The deconstruction of the hard drive was little more  
than a symbolic gesture, but what was brought to the  
foreground was how quickly and how buried virtual  
information is across a plethora of both physical and non-  
physical platforms. The resistance of digital information to  
being destroyed is the premise of this new body of work.

Taking the (restored) deleted fragments of an anonymous  
external hard drive as its starting point, Divisible  
Remainder questions the fractured contexts produced  
by intangible systems of information storage. The original  
content of the hard drive does not appear within the  
works, but its context is transferred, hauntologically  
engrained in the new images that are produced. By  
fracturing any sense of complete narrative foreclosure,  
the work seeks to create a subjective discourse in the  
absence of the original. Meaning becomes complicated  
through the metanarratives of re-enacted photographic  
fragments and situations, within the architecture of the  
exhibition space.

[www.janephillipsaward.com](http://www.janephillipsaward.com) • [www.swanseafestival.org](http://www.swanseafestival.org)  
[www.diffusionfestival.org](http://www.diffusionfestival.org)





Cipolwg Preifat  
*7yh Dydd Gwener 11 Medi*

I'w agor gan Rut Blees  
Luxemburg

Mewn Sgwrs gyda  
Bella Kerr  
*6yh Dydd Gwener 2ail Hydref  
Am Ddim a Chroeso i Bawb*

—

*Mae Ryan L.Moule yn byw  
a gweithio yn Abertawe.  
Astudiodd yng Ngholeg Celf  
Abertawe a'r Coleg Celf  
Brenhinol Llundain (MA)*

—

Arddangosfa Gwobr Jane  
Phillips 2015 yw Divisible  
Remainder; Arddangosfa  
Oriol Mission Gŵyl  
Ryngwladol Abertawe 2015  
ac yn cyd-ddigwydd â Gŵyl  
Ffotograffiaeth Ryngwladol  
Diffusion Ffotogallery, oll yn  
cymryd lle yn Abertawe  
a Chaerdydd yn ystod  
Hydref 2015.

Daw Divisible Remainder â chasgliad newydd o waith yr  
artist Ryan L.Moule at ei gilydd.

Pan ddinistriwyd hard drives Edward Snowden gan  
olygyddion papur newydd y Guardian, dan lygad  
wyladwrus Asiantaeth Ysbïo Llywodraeth Prydain,  
gwelwyd y cynhwysydd ffisegol o wybodaeth fel ffynhonnell  
y gwybodaeth gollyngol.

Roedd dinistrio'r hard drive dim mwy nag amnaid  
symbolaidd, ond beth ddaeth i glawr oedd pa mor gyflym  
a sut mae gwybodaeth gudd ddigidol ar draws plethora o  
lwyfannau ffisegol ac anffisegol. Gwrthladd gwybodaeth  
ddigidol i gael ei ddinistrio yw sail y corff newydd o  
waith yma.

Gan gymryd y darnau gwaredol (wedi'u hadfer) o hard  
drive allanol anhysbys fel pwynt dechrau, cwestiyna  
Divisible Remainder gyd-destunau tor wedi eu cynhyrchu  
o systemau anghyfyrdadwy storio gwybodaeth. Mae  
cynnwys gwreiddiol yr hard drive ddim i'w weld yn y  
gwaith, ond trosglwyddir y cyd-destun, wedi'u hargraffu  
yn y delweddau newydd. Wrth dorri unrhyw nod o  
flaengaead naratif cyflawn, mae'r gwaith yn edrych i greu  
cydymddiddan goddrychol yn absenoldeb y gwreiddiol.  
Daw dealltwriaeth yn gymhleth trwy feta naratif y darnau  
ffotograffig a sefyllfaoedd toredig ail-actiol, o fewn  
bensaerniaeth y lle arddangos.

## Events

*An exciting weekend of activities proving that  
everyone can have a safe, fun night out in Swansea.*

To mark Swansea's Purple Flag Weekend  
'Light Night', (2, 3 & 4 October) Ryan L.  
Moule, in collaboration with Alex Duncan,  
will project against the exterior of Mission  
Gallery from 7.30 - 10.30pm on Friday 2 and  
Saturday 3 October. This is a site specific  
work, relating to the buildings history.

Swansea International Festival Lunchtime Talks  
*1pm - 2pm Tuesday 6 October • Free  
Tracey McNulty, Head of Cultural Services,  
City & County of Swansea*

In a time of unprecedented pressure on the  
public purse, the Service faces immense  
challenges, and without new and innovative  
models and ways of working, tough decisions  
may need to be made. Here, Tracey McNulty,  
Head of Cultural Services at City and County of  
Swansea, outlines the Council's strategy for how  
Swansea will continue to benefit from its diverse  
mix of cultural activity – a vital source of income  
and prestige to the city – in the difficult times we  
face. A unique opportunity to hear about and  
discuss the roadmap that will lead us into the  
city's cultural future. [www.swanseafestival.org](http://www.swanseafestival.org)

## Digwyddiadau

*Penwythnos cyffrous o weithgareddau i brofi  
gall bawb gael noson ddiogel, hwyl yn Abertawe.*

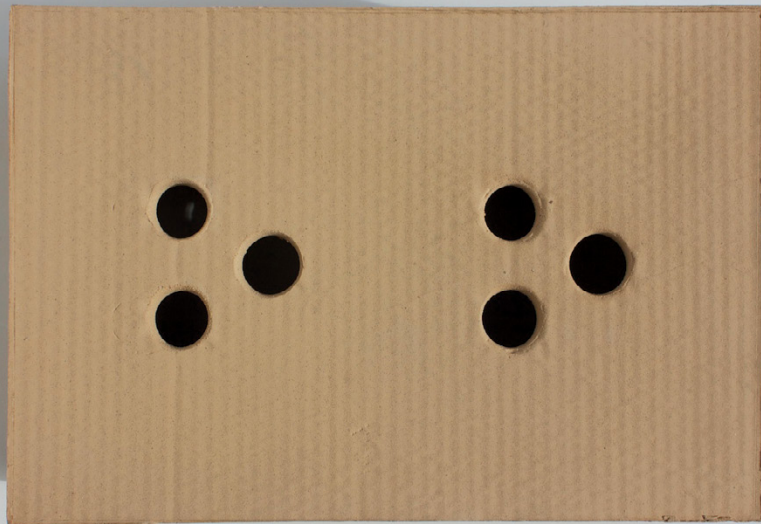
I farcio Penwythnos 'Noson Olau' Baner  
Borffor Abertawe, (2, 3 a 4 Hydref) bydd  
Ryan L. Moule, mewn cydweithrediad ag  
Alex Duncan, yn prosiectio ar Oriol Mission  
o 7.30 - 10.30yh ar ddydd Gwener 2 a ddydd  
Sadwrn 3 Hydref. Darn safle benodol yw  
hwn, yn cysylltu â hanes yr adeilad.

Sgyrsiau Amser Cinio Gŵyl Ryngwladol Abertawe  
*1yp - 2yp Dydd Mawrth 6 Hydref • Am ddim  
Tracey McNulty, Pennaeth Gwasanaethau  
Diwylliannol, Dinas a Sir Abertawe*

Mewn adeg o bwysau ansicr a'r pwrs cyhoeddus,  
mae'r Gwasanaeth yn gwynebu heriau aruthrol,  
a heb fodolau a ffyrdd newydd a dyfeisgar, efallai  
fydd rhaidd gwneud dewisiadau caled. Bydd Tracey  
McNulty, Pennaeth Gwasanaethau Diwylliannol  
Dinas a Sir Abertawe, yn amlinellu strategaeth  
y Cyngor ar sut fydd Abertawe yn parhau i  
fanteisio ar weithgarwch diwylliant amrywiol -  
ffynhonnell anhepgor incwm a bri i'r ddinas - pan  
yn gwynebu cyfnodau anodd. Cyfle unigryw i  
glywed a thrafod y map a fydd yn ein harwain i  
ddyfodol diwylliannol y ddinas.  
[www.swanseafestival.org](http://www.swanseafestival.org)

## Judith Rees • Maker in Focus

8 September – 11 October 2015



### *Maker in Focus*

*Maker in Focus promotes and supports excellence in Applied Art, through the profiling of talented Makers.*

### *Gwneuthurwr mewn Ffocus*

*Yn hybu a chymorth arbenigrwydd yng Nghelf Gymhwysol, trwy broffeilio Gwneuthurwyr talentog.*

This new body of work, created for Mission Gallery's Maker in Focus, takes the artist's Post Pop project in a sombre new direction.

Judith Rees uses the material of clay to realise her minimalist sculptures. She enjoys the 'taking' of packaging from supermarkets as a free item. By casting the box into a solid mould and re-figuring it into a wall mounted sculpture it is no longer a disposable container. The work encourages the viewer to examine what we throw away.

Mae'r corff newydd o waith yma, wedi ei greu ar gyfer Oriol Mission yn ehangu prosiect Post Pop yr artist mewn cyfeiriad newydd tywyll.

Defnyddia Judith Rees y defnydd o glai i amgyffred ei cherfluniau minimalaidd. Mwynha 'cymryd' pecynnau o archfarchnadoedd fel eitem am ddim. Wrth gastio'r bocs mewn mowld solid a'i newid i gerflun wâl nid yw yn gynhwysydd tafladwy bellach. Anoga'r gwaith y gwylwr i archwilio beth daflwn i ffwrdd.

## Sally Waterman • The [...] Space

8 September – 11 October 2015



'February' (2011) traces the artist's catamaran journey to the Isle of Wight to attend the funeral of a family friend, with the fleeting seascape becoming representative of her loss. 'Wisdom' (2013) documents Waterman's familial relationships, and the changing seasons over a three-year period through a stop-frame animation. 'Against' (2014) plays with the perception of family memory through a series of repetitive gestures, performed by the artist as she attempts to embody the projected images she took of her grandmother, just before she died twenty years ago.

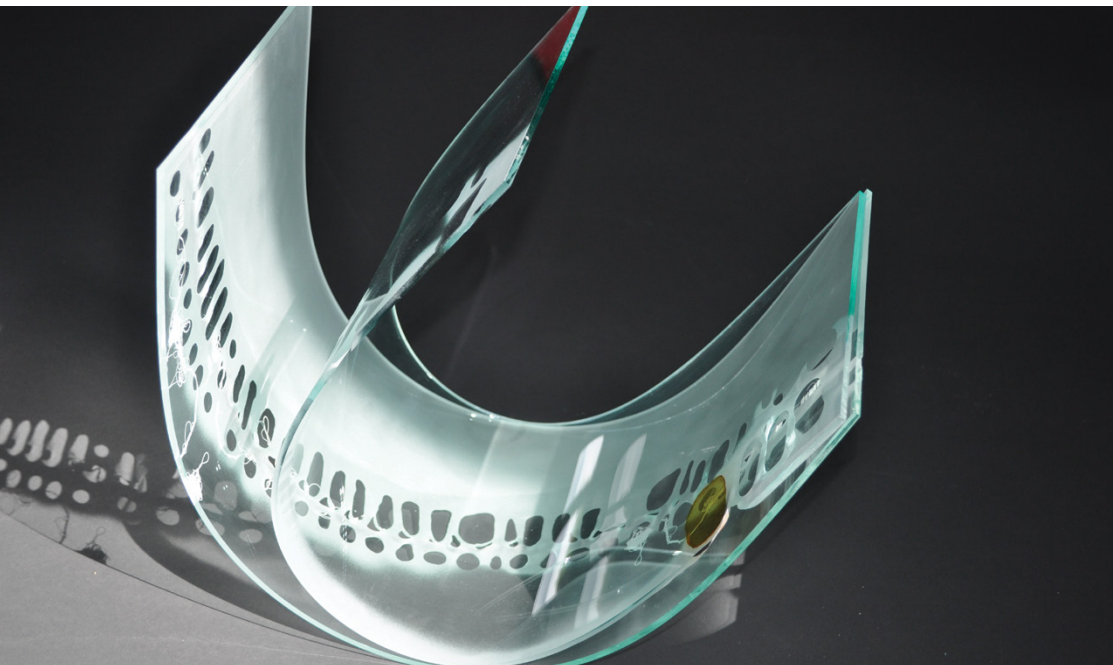
Dilyna 'February' (2011) daith catamarán yr artist i Ynys Wyth i fynychu angladd ffrind i'r teulu, gyda'r morlun diflanedig yn cynrychioli ei cholled. Dogfenna 'Wisdom' (2013) berthynas teuluol Waterman, a'r tymhorau newidiol dros gyfnod o dair blynedd trwy animeiddiad stop ffrâm. Chwaraea 'Against' (2014) gyda chanfyddiad atgof teulu trwy gyfres o ystumiau ailadroddol, wedi eu perfformio gan yr artist wrth iddi geisio ymgorffori'r delweddau prosiectiol gymrodd o'i mamgu, cyn iddi ddarford ugain mlynedd yn ôl.

*The 'Translucence' video series reflects upon mortality, bereavement and remembrance through Donna McKeivitt's musical score (1998) and writings by the filmmaker, Derek Jarman.*

*Mae'r gyfres fideo 'Translucence' yn myfyrio ar farwoldeb, colled ac atgof trwy sgôr cerddorol Donna McKeivitt (1998) ac ysgrifenyddiaeth y gwneuthurwr ffilm, Derek Jarman.*

## Catherine Brown • Maker in Focus

13 October – 15 November 2015



*Catherine is interested in structure, materials and making, often crossing and mixing the use of materials, especially ceramics and textiles. She draws influence from the structure of other materials in the production of glass sculpture.*

*Mae gan Catherine ddiddordeb mewn adeiladwaith a deunyddiau. Yn ei gwaith newydd ar gyfer Gwneuthurwr mewn Ffocws, archwilia potensial gwyrdr wedi'i ffurfio ag odyr fel cyfrwng i gyfleu breuder a chryfder.*

Catherine is interested in structure and materials. In her new work for Maker in Focus, she explores the potential of kiln formed glass as a medium to express both fragility and strength.

She works with tension and balance within the forms as a way to express her personal and emotional state. She enjoys the movement of natural light across the glass forms that continually changes shadows and reflections, some harsh and striking others soft and subtle. These contrasts echo the often ambivalent feelings expressed in her work.

Gweithiagydatensiwnachydbwyseddofewnnffurfiaufelfforddgyfleu ei meddwl personol ac emosiynol. Mwynha symudiad golau naturiol dros ffurfiau gwyrdr sydd yn newid cysgodion ac adlewyrchiadau'n barhaus, rhai'n wydn a thrawiadol ac eraill yn feddal a chraff. Adleisia'r gwrthgyferbyniadau yma'r teimladau aml ambivalent yn ei gwaith. Gwelir diddordeb Catherine yng ngerflunwaith, deunyddiau a gwneud, yn aml yn croesi a chymysgu defnydd y deunyddiau, yn enwedig cerameg a thecstilau. Mae hi'n cymryd ysbrydoliaeth o strwythur deunyddiau eraill yng nghynhyrchu cerflunwaith gwyrdr.

## Trywydd . Voyage • Bird-Jones & Heald • the [...] space

13 October – 15 November 2015



Last summer Bird-Jones & Heald filmed material inspired by collectively viewing significant architectural glass sites, artists' studios and museums throughout France during the 2014 Women's International Stained Glass Workshop. The Film captured visual details, including figures silhouetted against illuminated backdrops, hand gestures, composite interiors, changing landscapes and emerging patterns. Supported by Arts Council of Wales & Wales Arts International.

Haf diwethaf ffiliodd Bird-Jones & Heald ddeunydd wedi ei ysbrydoli gan edrych ar lefydd pwysig i wydr pensaernïol, stiwdios artist ac amgueddfeydd ar hyd Ffrainc yn ystod Gweithdy Ryngwladol Gwyrdr Lliw i Fenywod 2014. Mae'r ffilm wedi dal manylion gweledol, gan gynnwys ffigyrau cysgodol yn erbyn tirluniau goleuol, ystumiau llaw, tirluniau mewnol, tirluniau newidiol a phatrymau dangosol. Wedi ei gefnogi gan Gyngor Celfyddydau Cymru a Chelfyddydau Rhyngwladol Cymru.

*Part of this body of research focused on the Welsh artists taking part: Amber Hiscott, Catrin Jones, Chris Bird-Jones & Karen Heald. Trywydd . Voyage explores the intimacy, quality, nuances, details, sensitivity and beauty of the Welsh centric aspect of this journey.*

*Mae rhan o'r corff yma o ymchwil yn ffocysu ar drywydd yr artistiaid Cymreig a gymrodd rhan: Amber Hiscott, Catrin Jones, Chris Bird-Jones a Karen Heald. Archwilia Trywydd. Voyage nodwedd Gymreig y daith yma, yr agosatrywydd, ansawdd, arlliw, manylion, sensitifedd a phrydferthwch.*

# Telling Tales: Sculptural Ceramics by Anna Noël

21 November 2015 – 10 January 2016

## Exhibition



*The Language of Clay: Part One comprises three solo exhibitions of work by three Wales based, female ceramic artists, all with a pivotal dynamic in contemporary ceramics. Notably, the work of all three engages with humanity. All of the exhibitions will be accompanied by accessible programmes of engagement.*

*The Language of Clay: Part One continues with Micki Schloessing, whose exhibition opens at Mission Gallery in summer 2016, and then with an exhibition of work by Anne Gibbs in 2017. The full series tours to venues across Wales.*

The Language of Clay:  
Part One

A Mission Gallery  
National Touring Exhibition

Curated by Ceri Jones

Private View

11am - 4pm Saturday  
21 November 2015

11yb - 4yp Sadwrn  
21 Tachwedd 2015

In Conversation  
with Ceri Jones

12pm Sat 21 November  
Free & All Welcome

12yp Sadwrn 21 Tachwedd  
Am ddim a Chroeso i Bawb

Touring Schedule

Oriel Canfas, Cardiff:  
16 Jan - 28 Feb 2016

Ruthin Craft  
Centre, Denbighshire:  
23 April - 10 July 2016

Llantarnam Grange  
Arts Centre, Cwmbran:  
Summer - Autumn 2016

Ceramic Gallery,  
Aberystwyth:  
Autumn - Winter 2016

Anna Noël's work is motivated by narrative. Her figurative pieces explore interaction between the animal and human worlds, often drawing on myth and legend. Anna's enigmatic ceramic sculptures present a seeming simplicity. Yet they often encompass symbolism and mysticism, evoking intrigue distinctive of her practice.

Anna Noël is both invigorating and consolidating her practice through research and development integral to producing a new body of work for this major solo exhibition. The Language of Clay project affords an opportunity to see Anna's work in a different realm and on a different scale. Presenting this solo exhibition, Telling Tales, allows Anna significant focus to create a body of work that is cohesive and representative, enabling an immersive context for audiences to explore her creative world.

As with all the exhibitions in The Language of Clay, Telling Tales is a chance to advocate and share Anna's work with new audiences. It tours to several venues across Wales and is accompanied by engagement activities.

Mae Anna Noël yn delio gyda naratif. Archwilia'i gwaith ffigurol y cyfnewid rhwng byd anifail a dynol, yn aml yn edrych ar fytholeg a chwedlau. Cyflwynna cerfluniau cerameg Anna symlrwydd ymddangosedig. Ond maent fel arfer yn amgylchynu symbolaeth a chyfrinedd, gan ein hatgoffa o gudamcan nodweddiadol ei hymarfer.

Mae Anna Noël am ddadflino ei hymarfer drwy ymchwil a datblygiad arwyddocaol i greu corff newydd o waith i'r arddangosfa unigol fwyaf yma. Rhy'r prosiect 'Iaith Clai' gyfle i weld gwaith Anna mewn tir ac ar raddfa hollol wahanol. Wrth gyflwyno'r arddangosfa unigol yma, Adrodd Straeon, rhy ffocws arwyddocaol i Anna greu corff o waith sydd yn aduno ac adrihiol, gan alluogi cyd-destun trochol i gynulleidfaoedd i archwilio ei byd creadigol.

Gyda phob arddangosfa yng nghyfres 'Iaith Clai', cyfle yw 'Adrodd Straeon' i bledio a rhannu gwaith Anna gyda chynulleidfaoedd newydd. Mi fydd yn teithio i nifer o sefydliadau eraill ar draws Cymru a'i gynorthwyo gan weithgareddau ymrwymol.

## Sian O'Doherty • Maker in Focus

17 November 2015 – 10 January 2016



*Sian O' Doherty is an award winning textile artist and designer located in Pembrokeshire, West Wales. Taking inspiration from the natural beauty of her home landscape.*

*Artist a dylunydd tecstil gwobrwyol yw Sian O'Doherty wedi ei selio yn Sir Benfro, Gorllewin Cymru. Gan gymryd ysbrydoliaeth o brydferthwch naturiol tirlun ei chartref.*

Sian designs and hand makes each product personally ensuring unsurpassed attention to the smallest of details.

Using a hand powered knitting machine and the highest quality lambswool, each piece is carefully washed and dried giving a beautifully soft and tactile fabric. All materials are sourced in the UK and customers can be assured that sustainability and traceability has and will always be paramount in Sian's choices.

Dylunia Sian a gwneir â llaw pob darn yn bersonol gan sicrhau sylw difaeddlyd i'r manylyn lleiaf.

Gan ddefnyddio peiriant pŵer llaw a gwlan oen o'r ansawdd orau, mae pob darn wedi ei olchi a sychu'n ofalus gan adael ffabrig meddal a chyffyrddol. Mae'r deunyddiau oll wedi eu tarddu yn y DU a gall cwsmeriaid fod yn siŵr o gynladwyedd a tharddle, sydd yn holl bwysig i ddewisiadau Sian.

## Eva Bartussek • the [...] space

17 November 2015 – 10 January 2016



'The Minutes' presents a documentary portrait of two women's repeated visits to St Non's Well on and around the Saint's feast day.

The work explores notions of patience, fertility and social history. A video loop emphasises the process of editing this photographic body of work, experimenting with diptychs, sequences and temporal rhythms.

Cyflwyno 'The Minutes' portread ddogfen o deithiau ailadroddol dwy fenyw i Ffynnon Santes Non ar ac o amgylch diwrnod gwledd y Santes.

Archwilia'r gwaith syniadau o amynedd, ffrwythlonrwydd a hanes cymdeithasol. Pwysleisia'r fideo cylchol y broses o olygu'r corff ffotograffig yma o waith, gan arbrofi gyda diptychau, dilynaiad a rhythmiau amserol.

*Eva Bartussek is a photographer who is interested in expanded notions of portraiture within a photographic context. Eva is also a Photography Lecturer at Swansea College of Art, University of Wales Trinity Saint David.*

*Ffotograffydd sydd â diddordeb yn amcannau ehangol portreadau o fewn cyd-destun ffotograffig yw Eva Bartrussek. Mae Eva hefyd yn Ddarlithydd Ffotograffiaeth yng Ngholeg Celf Abertawe, Prifysgol y Drindod Dewi Sant.*

## September Workshops



Family Arts Festival • 9 Oct - 1 Nov

### Snap Shot Girls: Exhibition 12 - 26 Sept

The local photography group SnapShot Girls are working with Mission Gallery for this year's Family Arts Festival. Fascinated by people and the stories behind them, this exhibition delves into the idea of community and highlights the personal interpretations the word holds.

### Snap Shot Girls: Family Workshop 11am - 1pm Saturday 19 Sept

Free and open to all ages. This workshop is welcome to all families. In coming along you will have the option to embark with Snap Shot Girls into the surrounding area, taking photographs of the local Swansea community. After experiencing this engaging process, the results will feature in the current exhibition.

*"My son was spoken to directly as his own person and was allowed to create freely, through drawing and craft"*

- Parent Feedback

## October Workshops



### It's Just An Illusion

2 - 5pm Saturday 3 October • Free

An investigation into looking and seeing followed by the creation of your very own optical illusions. Inspired by Purple Flag Weekends 'Light Night'. Led by artist Daniel Trivedy.

### A Big Draw Workshop

#### Once Upon A Time...

11am - 2pm Tues 27 October  
Free • Suitable for ages 7+

Led by Kat Ridgway. Illustrate and author your own concertina story book. Follow the pointers to help create the imaginary tale alongside your drawings.

### Pin Hole Photography

11am - 2pm Weds 28 October  
£6 • Suitable for ages 7+

Led by Artist Rachael Leahy. Inspired by Ryan Moule's 'Divisible Remainder'.

### Urban Workshop

11am - 1pm Thurs 29 October  
Free • All Ages Welcome

As a part of the Family Arts Festival Trail, come and learn the different techniques that go into creating urban art - such as stencilling, painting and sculpture.

## October Workshops

### Mixed Media Ghostly Portraits

11am - 2pm Fri 30 October  
£6 • Suitable for ages 7+

Prepare for a scare as we create ghoulish portraits! Using heat press transfer printing and other mediums to create ghostly layered portraits. Led by artist Lucy Read.

### Halloween Workshop: Come dressed in your favourite costume!

11am - 2pm Sat 31 October  
Cost £6 • Suitable for ages 7+

Ghouls and monsters made from wire. This workshop welcomes all families and will be led in Welsh & English by Maker Rhian Wyn Stone.

## November Workshops



### Stories & Magical Creatures

11am - 4pm Saturday 21 Nov  
Free drop-in workshop for all ages

Exploring stories and magical creatures, these workshops will take words and rhymes as a starting point. Imaginations can then take the lead in creating wondrous sculptures.

Inspired by our National Touring Exhibition, Telling Tales, sculptural ceramics by Anna Noël.

## December Workshops



### Salt Dough Characters

11am - 2pm Sat 12 December  
£6 • Suitable for ages 7+

Led by Artist Kat Ridgway. Squish and play with salt dough and form characters from your wildest imaginations.

### Clay Gift Tags & Decorations

11am - 2pm Sat 19 December  
Free Family Drop In Workshop

Led by Artist Kat Ridgway. Make your own clay gift tags and decorations using air drying clay or salt dough and an assortment of sparkly materials. Fun for all the family!

### Angels & Elves

11am - 2pm Tues 22 December  
£6 Suitable for ages 7+

Led by Artist Kat Ridgway. Create your own special Christmas angel or elf using clay forming techniques.

To book a place or for more information give us a call on 01792 652016.

Places available for parents at the same price.

Please visit our activities page for a full list of workshops: [www.missiongallery.co.uk](http://www.missiongallery.co.uk)



## Gweithdai Medi



Gŵyl Celfyddydau'r Teulu • 9 Hydref - 1 Tachwedd

### Snap Shot Girls: Arddangosfa 12 - 26 Medi

Mae'r grŵp ffotograffiaeth lleol Snap Shot Girls yn gweithio gydag Oriol Mission am Ŵyl Celfyddydau Teulu blwyddyn yma. Wedi'u cyfareddu gan bobl a'u storiâu, mae'r arddangosfa yma yn turio i'r syniad o gymuned ac uwcholeuo'r dehongliadau personol mae'r gair yn ei ddal.

### Snap Shot Girls: Gweithdy Teulu 11yb - 1yp Sadwrn 19 Medi

Am ddim ac ar agor i bob oedran. Croeso i bob teulu yn y gweithdy yma. Wrth gyfrannu bydd gennych opsiwn i fynd ar daith gyda Snap Shot girls i'r ardal amgylchynol, gan dynnu lluniau o gymuned lleol Abertawe. Ar ôl profi'r proses yma, bydd y canlyniadau i'w gweld yn yr arddangosfa.

*"Siaradwyd â fy mab fel person yn ei hun ac roedd ganddo'r rhyddid i greu, trwy arlunio a chrefft"*

- Barn Rhiant

## Gweithdai Hydref



### Ond Rhith

2 - 5yp Sadwrn 3 Hydref • Am ddim

Archwiliad i edrych a gweld yn dilyn creu eich rhith chi eich hun. Wedi ei ysbrydoli gan Benwythnosau 'Noson Olau' y Baner Borffor. Arweinir gan Daniel Trivedy.

### Gweithdy Darlun Mawr

#### Unwaith yn y Gorffennol...

11yb - 2yp Mawrth 27 Hydref  
Am ddim • Oedran 7+

Arweinir gan Kat Ridgway. Darluniwch a llunio llyfr stori cencertina eich hun. Dilynwch bwyntiau i'ch helpu i greu stori dychmygol ynghyd a'ch darluniau.

### Ffotograffiaeth Twll Pin

11yb - 2yp Mercher 28 Hydref  
£6 • Oedran 7+

Arweinir gan yr Artist Rachael Leahy. Wedi ei ysbrydoli gan 'Divisible Remainder' Ryan Moule.

### Gweithdy Dinesig

11yb - 1yp Iau 29 Hydref  
Am ddim • Croeso i bob oedran

Fel rhan o Lwybr Gŵyl Celfyddydau'r Teulu, dewch i ddysgu technegau gwahanol sydd yn rhan o greu celf dinesig - stensilio, peintio a cherflunwaith.

## Gweithdai Hydref

### Portreadau Ysbrydol Aml-gyfrwng

11yb - 2yp Gwener 30 Hydref  
£6 • Oedran 7+

Paratowch am sioc wrth i ni greu portreadau ellylloll! Gan ddefnyddio printio trosglwyddiad gwres a chyfryngau eraill i greu bortreadau ysbrydol. Arweinir gan yr artist Lucy Read.

### Gweithdy Calan Gaeaf:

#### Dewch yn eich hoff gwisg!

11yb - 2yp Sadwrn 31 Hydref  
£6 • Oedran 7+

Ellyllon ac anghenfilod wedi ei gwneud o Wifren. Croesawir pob teulu yn y gweithdy yma ac fe arweinir yng Nghymraeg a Saesneg gan y gwneuthurwr Rhian Wyn Stone.

## Gweithdai Tachwedd



### Straeon a Chreaduriaid Hudol

11yb - 4yp Sadwrn 21 Tachwedd

Gweithdy Galw-i-fewn am ddim i bob oedran

Gan archwilio straeon a chreaduriaid hudol, bydd y gweithdai yma yn cymryd geiriau a rhigymau fel pwynt dechrau. Gall dychymy arwain at greu cerfluniau rhyfeddol. Wedi ei ysbrydoli gan ein Arddangosfa Deithiol Rhyngwladol, Adrodd Straeon, serameg cerflunol gan Anna Noël.

## Gweithdai Rhagfyr



### Cymeriadau Toes Halen

11yb - 2yp Sadwrn 12 Rhagfyr  
£6 • Oedran 7+

Arweinir gan Artist Kat Ridgway. Chwarae gyda toes halen a chreu cymeriadau dychymyglol.

### Addurniadau a Tagiau Anrhegion Clai

11yb - 2yp Sadwrn 19 Rhagfyr  
Gweithdy Galw-i-fewn am Ddim

Arweinir gan yr Artist Kat Ridgway. Creu tagiau ac addurniadau anrhegion clai gan ddefnyddio clai wedi ei sychu ag aer a thoes halen gydag amrywiaeth o ddeunyddiau sbarcllog. Hwyl i'r teulu oll!

### Angylion ac Elffiaid

11yb - 2yp Mawrth 22 Rhagfyr  
£6 • Oedran 7+

Arweinir gan yr Artist Kat Ridgway. Creu eich angel neu elff Nadoligaidd eich hun gan ddefnyddio technegau ffurfio clai.

I fwcio lle ac am fwy o wybodaeth cysylltwch â ni ar 01792 65201.

Llefydd ar gael i oedolion hefyd am yr un pris.

Ymwelwch â'n tudalen gweithgareddau am restr lawn o weithdai: [missiongallery.co.uk](http://missiongallery.co.uk)

# Craft at Mission Gallery

*Contemporary Ceramic, Glass, Textile, Jewellery & Design*



1.

1. Sian O'Doherty  
2. Peter Bodenham

Mission Gallery is at the cutting edge of applied art, craft and design. It is renowned for excellence; selecting contemporary craft and design objects for the established collector to the first time buyer. Presented within an art led environment; where the best of local, national and international makers and designers can be found.

The curated environment presents a changing display of contemporary ceramic, glass, textile, jewellery and design from both established and emerging makers and artists. It provides opportunities for artists/makers to engage with the visiting public and assists the development of the region's cultural sector whilst also providing an income stream and opportunity for artists to establish their creative career in Wales.

And with Christmas fast approaching, why not think ahead and invest in that 'perfect' gift!

Mae Oriel Mission ar linell flaen celf gymhwysol, crefft a dylunio. Yn adnabyddedig am arbenigrwydd; gan ddethol gwrthrychau crefft a dylunio cyfoes i'r casglwr sefydledig a'r prynwr cyntaf. Wedi eu cyflwyno mewn amgylchedd celf, lle mae'r gorau o wneuthurwyr a dylunwyr lleol, cenedlaethol a rhyngwladol i'w darganfod.

Cyflwyno'r amgylchedd curadurol yma arddangosfa newidiol o gerameg, gwydr, tecstil, gemwaith a dylunio cyfoes o wneuthurwyr ag artistiaid sefydledig ac ymddangosedig. Darpara gyfleoedd i artistiaid/gwneuthurwyr gysylltu gyda'r cyhoedd ymwelededig a chefnogi datblygiad sector diwylliannol yr ardal wrth ddarparu llinell incwm a chyfle i'r artistiaid yma sefydlu eu gyrfaedd creadigol yng Nghymru.

A gyda Nadolig ar y trothwy, beth am feddwl o flaen llaw a buddsoddi yn yr anrheg 'perffaith' yna!

## Christmas Holiday Hours

Usual Opening Hours: 11am - 5pm Tuesday - Sunday  
Closed: 25 - 28 December 2015, 1 Jan 2016

Oriau agor cyffredinol: 11yb - 5yp Mawrth - Sul  
Ar gau: 25 - 28 Rhagfyr 2015, 1 Ionawr 2016



2.

## Christmas Show

*Opens 11am - 5pm,  
Saturday 21 Nov 2015*

Until 10 January 2016

Gift Vouchers can be purchased at the gallery.

Collectorplan, the Arts Council of Wales' interest free credit scheme, is also available.

—

*Ar agor 11yb - 5yp,  
Sadwrn 21 Tachwedd 2015*

Nes 10 Ionawr 2016

Talebau Anrheg i'w cael yn yr oriel.

Mae'r Cynllun Casglu, gwasanaeth credyd di-log Cyngor Celfyddydau Cymru, hefyd ar gael.



Julie Arkell



Claire Gaudion



Duncan Ayscough



Michael Carberry



Sian O'Doherty



Justine Allison



Justine Allison



Sue Lane

## Forthcoming • Dyfodol

*Exhibitions • Maker in Focus • the [...] space*



Rhian Haf

*A Ruthin Craft Centre Exhibition  
23 January – 12 March 2016*



Louise Hobson

*Jane Phillips Award Curatorial Residency  
16 March – 10 April 2016*



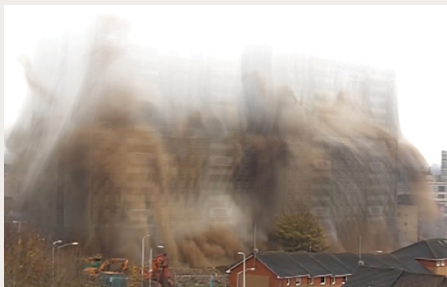
Daniel Boyle

*Maker in Focus • Gwneuthurwr mewn Ffocus  
12 Jan – 21 Feb 2016*



Julie Brunskill

*Maker in Focus • Gwneuthurwr mewn Ffocus  
23 Feb – 3 April 2016*



Katharine Fry

*the [...] space • y lle [...]  
12 Jan – 21 Feb 2016*



Leah Millinship

*the [...] space • y lle [...]  
23 Feb – 3 April 2016*

## Mission Gallery

*About & Visiting • Amdanom & Ymweld*



Mission Gallery is one of Wales' best adapted spaces for the contemporary arts. Mission Gallery has developed a reputation for dynamic and distinctive programming, to present excellence across the visual arts, applied arts and craft, from across Wales and beyond.

We are located on Swansea Marina near the City Centre, a 15 minute walk from Swansea Train Station and a 10 minute walk from Swansea's central bus station. Pay & display car parks are situated close by, with limited free 3 hour parking outside the gallery. Access is by one-step entry from pavement level through to our main entrance. There is

level access throughout the gallery spaces, with education based on the first floor. A wheelchair ramp is also available on request.

Un o safleoedd gorau Cymru am gelf gyfoes yw Oriel Mission. Mae'r Oriel wedi datblygu enw da am rhaglen deinamig a gwahanredol, i gyflwyno arbennigrwydd ar draws y byd celf gweledol, cymhwysol a chrefft, o Gymru ac ymhellach.

Rydym ni wedi ein lleoli yn Marina Abertawe yn agos i ganol y ddinas, taith 15 munud ar droed o orsaf drennau Stryd Fawr Abertawe a 10 munud o orsaf fysiau Abertawe. Mae yna feysydd parcio talu ac arddangos yn agos, gyda peth parcio 3 awr am ddim tu allan i'r oriel. Mae yna un gris o lefel y palmant trwy ein prif mynediad. Mae yna lawr lefel trwy gydol y gwagleoedd arddangos, gyda'r lle addysg ar y llawr cyntaf. Mae yna ramp cadair olwyn i gael ar ymfyn.

*Front Cover • Clawr • Anna Noël*

*Brochure Design by Matthew Otten  
[www.matthewotten.co.uk](http://www.matthewotten.co.uk)*

Mission Gallery  
Gloucester Place  
Swansea • SA1 1TY

01792 652016

[www.missiongallery.co.uk](http://www.missiongallery.co.uk)  
[info@missiongallery.co.uk](mailto:info@missiongallery.co.uk)

Open 11am - 5pm Tuesday - Sunday  
Closed Mondays • Open Bank Holidays  
Admission Free

Ar agor 11yb - 5yp dydd Mawrth - dydd Sul  
Ar gau bob dydd Llun • Ar agor Gwyliau Banc  
Mynediad am ddim.



Jane Phillips Award



[www.missiongallery.co.uk](http://www.missiongallery.co.uk)

