

Mission Gallery

GRADUATE SHOWCASE 2015

*Supporting excellence, nurturing development and pushing the boundaries of
Visual & Applied Art, Design and the Moving Image.*





Graduate Showcase 2015

Maker in Focus & the [...] space • 4 August – 6 September 2015



“Supporting excellence, nurturing development and pushing the boundaries of Visual & Applied Art, Design and the Moving Image”

Following the success of last year’s Graduate Showcase, Mission Gallery has now developed this opportunity to include art, craft, design, still and moving image, which will now encompass both programming strands; Maker in Focus and the [...] space.

Mission Gallery has developed a reputation for dynamic and distinctive programming, to present excellence across the visual arts, applied arts and craft, from across Wales and beyond. For this Graduate Showcase, work has been selected from various degree shows around the UK and New Designers. Focusing on artists, makers and designers who have showcased excellence within their specialised field; highlighting those that are pushing the boundaries of traditional concepts and ideas, blurring the lines between disciplines and celebrating art and craft in all its forms.



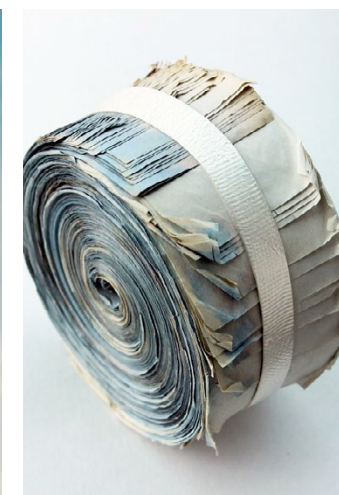
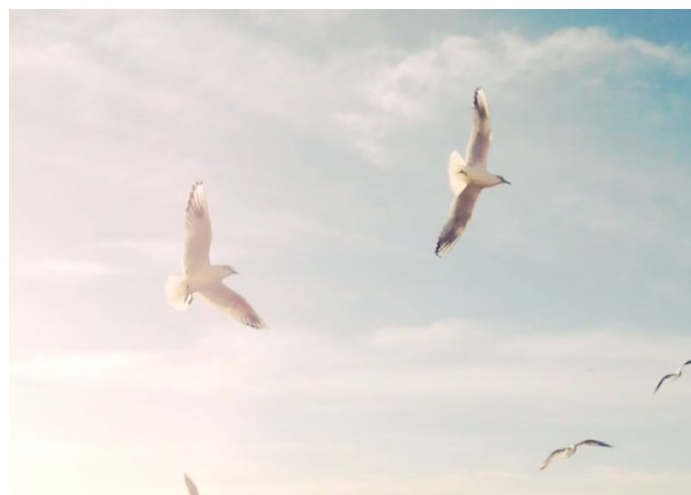
Sioe Graddedigion 2015

Gwneuthurwr mewn Ffocws a'r lle [...] • 4 Awst – 6 Medi 2015

“Yn cefnogi arbenigrwydd, gan feithrin datblygiad a gwrthio ffiniau Celf Gweledol a Chymhwysol, Dylunio a'r Ddelwedd Symudol”

Yn dilyn llwyddiant Sioe Graddedigion llynedd, mae Oriol Mission wedi datblygu'r cyfle hwn i gynnwys celf, chrefft, dylunio, delwedd llonydd a symudol, a fydd nawr yn cwmpasu'r ddwy raglen arddangos; Gwneuthurwr mewn Ffocws a'r lle [...].

Mae Oriol Mission wedi datblygu enw da am raglen deinamig a gwahan-redol, i gyflwyno arbenigrwydd ar draws y byd celf gweledol, cymhwysol a chrefft, o Gymru ac ymhellach. Dewisir gwaith o nifer o sioeau gradd ar hyd y DU a New Designers. Byddwn yn ffocysu ar artistiaid, gwneuthurwyr a dylunwyr a fydd wedi arddangos arbenigrwydd yn eu maes arbenigol; gan amlygu'r rheini sydd yn gwrthio ffiniau cysyniadau a syniadau tradodiadol, gan aflunio'r llinellau rhwng disgyblaethau a dathlu holl ffurfiau celf a chrefft.





KATIE ALDERSON

Nottingham Trent University

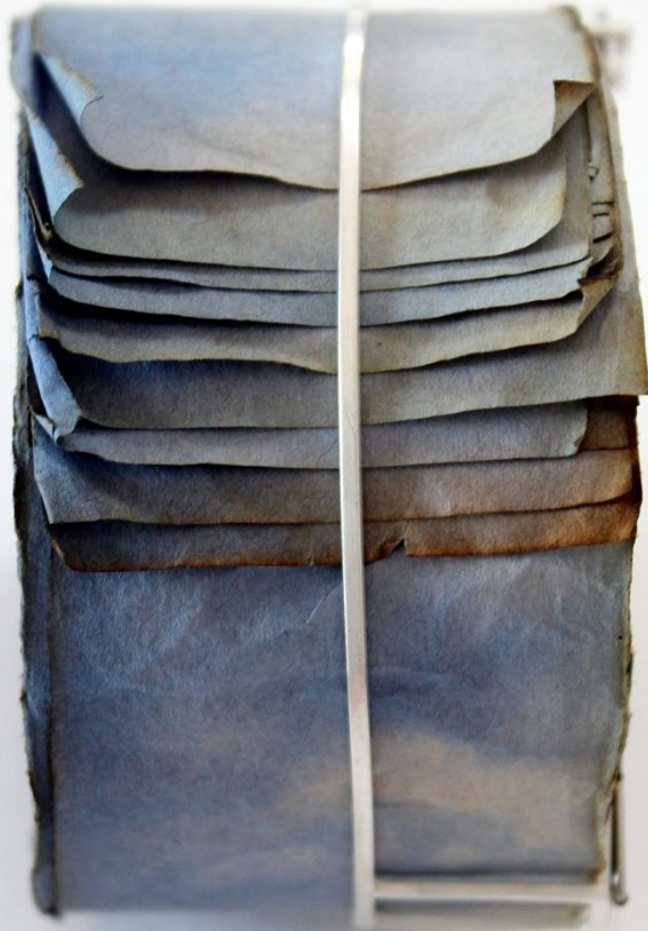
Ideology Workshop is a multi-discipline design studio, dedicated to creating bespoke contemporary lighting and mixed media artworks. Katie Alderson graduated from Nottingham Trent University in 2015 with a First Class Honors in Decorative Arts; her process-led practice aims to emphasise the beauty of craftsmanship and material harmony within contemporary design.

Katie's curiosity stems from Greek mythology and its consequence within the world around her. Carefully researched narratives and modern stereotypes allow her to playfully design artifacts which each tell a significant story.

Stiwdio ddylunio amlddisgyblaeth yw Ideology Workshop, yn ymroddedig i greu goleuadau a darnau celf aml-gyfrwng cyfoes. Graddiodd Katie Alderson o Brifysgol Nottingham Trent yn 2015 gyda Gradd Dosbarth Cyntaf yng Nghelfyddydau Addurnol; mae ei hymarfer llawn proses am bwysleisio prydferthwch gwaith crefft a deunydd mewn cytgorod o fewn dylunio cyfoes.

Daw diddordeb Katie o chwedlau a'i ganlyniad o fewn y byd o'i hamgylch. Ymchwiliad gofalus i naratif ac ystrydebau modern yn galluogi iddi ddylunio arteffactau chwareus sydd yn adrodd stori arwyddocaol.





RACHEL BLAIR

Glasgow School of Art

Rachel is a recent graduate from the Glasgow School of Art, 2015. She is a jeweller, designer, maker from the Northern Isles of Orkney. Interested in creating pieces which contain a balance of material, pressure and tension, her work is an expression of her constant longing for a sense of belonging.

Pieces are mainly constructed from wire frames with tension set wound papers. These papers are hand dyed and wound individually to create intricate patterns incorporating flaws and ripples. She uses paper to create pieces that have a fleeting preciousness, and it is the wearing away of these papers within a materially precious band that is of interest. The piece itself is always under tension and stress, but aesthetically complete.

Graddedigwr diweddwr o Ysgol Gelf Glasgow, 2015. Gemydd, dylunwr a gwneuthurwr ydyw o Ynysoedd Gogleddol Orkney. Gyda diddordeb mewn creu darnau sydd yn cynnwys cydbwysedd deunydd, gwasgedd a thensiwn, mynegiant o'i hiraeth parhaol am syniad o berthyn.

Mae'r darnau wedi eu hadeiladu gan amlaf o fframiau gwifren gyda phapurau wedi'u troi ar densiwn. Mae'r papurau yma wedi'u lliwio â llaw a'u troi'n unigol i greu patrymau sydd yn cynnwys namau a rychu. Defnyddia bapur i greu darnau sydd â gwerthfawredd diflannol, y treulid o'r papurau yma o fewn band materol gwerthfawr sydd o ddiddordeb. Mae'r darn ei hun dan densiwn a phwysedd yn barhaol, ond yn gyfan estheteg.





KERRY CLEMENTS

Cardiff Metropolitan University

Kerry Clements is a recent Artist Designer:Maker graduate at Cardiff School of Art and Design. Her work is multidisciplinary, often focusing on wood and ceramics and exploring the theme of materiality. Kerry's degree work explores the idea of hybrid furniture, incorporating metal and ceramics as visual elements within hardwood pieces.

Yn raddedig o gwrs Dylunwr:Gwneuthurwr Coleg Celf a Dylunio Caerdydd mae Kerry Clements. Mae'l gwaith yn amddisgyblaethol, gan ffocysu ar bren a serameg ac archwilio'r them a fateroldeb. Archwilia geith gradd Kerry y syniad o ddodrefn hybrid, gan gorffori metel a serameg fel nodweddion gweledol o fewn darnau pren called.





HOLLY DAVIES

Carmarthen College of Art

Holly Hart creates three-dimensional textiles artworks which are inspired by her childhood memories. Delving into the natural world, Holly invites the viewer to look at the details around us. She constructs delicate and intricate structures influenced by scenes from her grandparent's garden. Holly aims to capture the enchanting and fairytale qualities which the garden and its inhabitants possessed when she was a child. Playing with scale, text and layering, she transforms fragmented memories into solid forms.

Using her fine art background as grounding to her work, she illustrates her memories and encapsulates them in glass domes.

Mae Holly Hart yn creu darnau celf tecstilau tri dimensiwn wedi eu hysbrydoli gan atgofion plentyndod. Gan edrych ar y byd naturiol, gwahodd Holly y gwylwr i edrych ar y manylion o'n hamgylch. Adeilada strwythurau manwl a chywrair wedi ei hysbrydoli gan y golygfeydd o ardd ei mamgu a thadcu. Nod Holly yw dal nodweddion hudol a chwedlonol yr ardd a'i breswylwyr pan oedd hi'n blentyn. Gan chwarae â graddfa, ysgrifen a haenau, trawsffurfia'r atgofion darniol yma i ffurfiau solid.

Gan ddefnyddio'i chefnidir celf gain fel sylfaen i'w gwaith, darlunia'i atgofion a'u dal o fewn gwydr.



that surrounded me • I felt tiny in it



FRANCES DIXON

Swansea College of Art (UWTSD)

Frances creates limited edition textiles to be used as products for the domestic space. She has explored the feminine stereotype and the historical relationship between textiles and the domestic space throughout her third year. Conscious of these associations, Frances is passionate about producing work that is rendered using traditional methods such as hand dyeing, silk-screen printing and embroidery.

Inspired by Scandinavian minimalist aesthetic, she explores traditional processes to create textiles that have distinct, inventive colour combinations and textures. Her graduate collection is inspired by bringing the outdoors in, combining landscape with still life to create contemporary pieces for the home.

Mae Frances yn creu tecstilau argraffiad cyfyngedig i'w defnyddio fel cynhyrchion ar gyfer y lle domestig. Archwilia'r ystrydeb fenywaidd a'r berthynas hanesyddol rhwng tecstilau a'r lle domestig. Yn ymwybodol o'r cysylltiadau yma, mae Frances yn teimlo'n gryf dros creu gwaith trwy ddefnyddio ffyrdd traddodiadol fel lliwio â llaw, printio sgrîn sidan a brodwaith.

Wedi ei hysbrydoli gan estheteg lleiafol Llychlynaidd, archwilia prosesau traddodiadol i greu tecstilau gyda chyfuniadau lliw a gweadau gwahanol a dyfeisgar. Mae'r casgliad yma wedi ei ysbrydoli â dod a'r tu allan i fewn, gan gyfuno tirlun gyda bywyd esmwyth i greu darnau cyfoes i'r cartref.





BLEDDYN LEWIS

Cardiff School of Art & Design

Clay is a fairly technical medium, and at the beginning of one's journey as a ceramist the technical aspects seem all important. Working on the potter's wheel naturally lends itself to making functional vessels. However, Bleddyn finds that function comes from the user, and from this his attention shifts to what is being made, why is it being made, is it relevant to who the maker and what he/she wants to say as an artist.

Bleddyn surrenders to the moment whilst making and has no fear of changes or destroying the pieces. He likes to think he can be a part of the creative moment without deciding on its outcome.

Mae clai yn ffeunydd eithaf technegol, ac ar ddechrau taith un fel seramegydd mae'r agweddau technegol i weld yn holl bwysig. Mae gweithio ar olwyn crochenydd yn pwysu tuag at gwneud gwrthrychau defnyddiol. Er hyn, mae Bleddyn o'r farn mai defnydd yn dod o'r defnyddiwr, ac oherwydd hyn symuda'i sylw i'r hyn sydd yn cael ei greu, pam caiff ei greu, a ydyw'n berthnasol i'r gwneuthurwr a beth mae ef/hi am ei ddweud fel artist.

Ildia Bleddyn i'r funud tra'n gwneud ac nid oes ganddo ofn newid neu ddinistrio'r darn. Hoffai feddwl gall fod yn rhan o'r funud creadigol heb benderfynnu ar ei ganlyniad.





EMILY TAYLOR

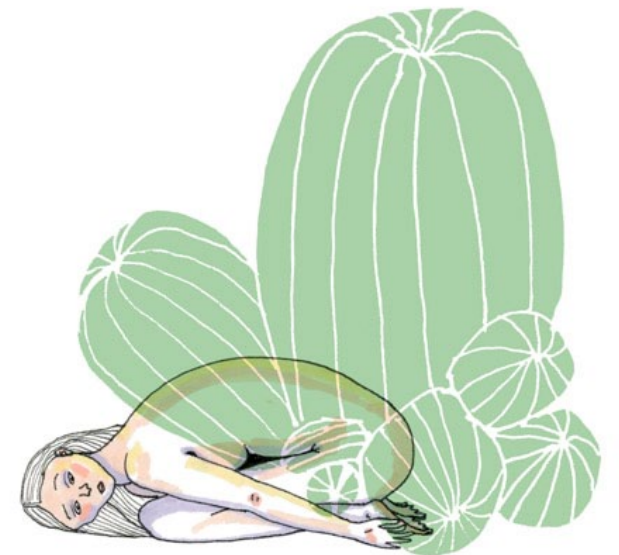
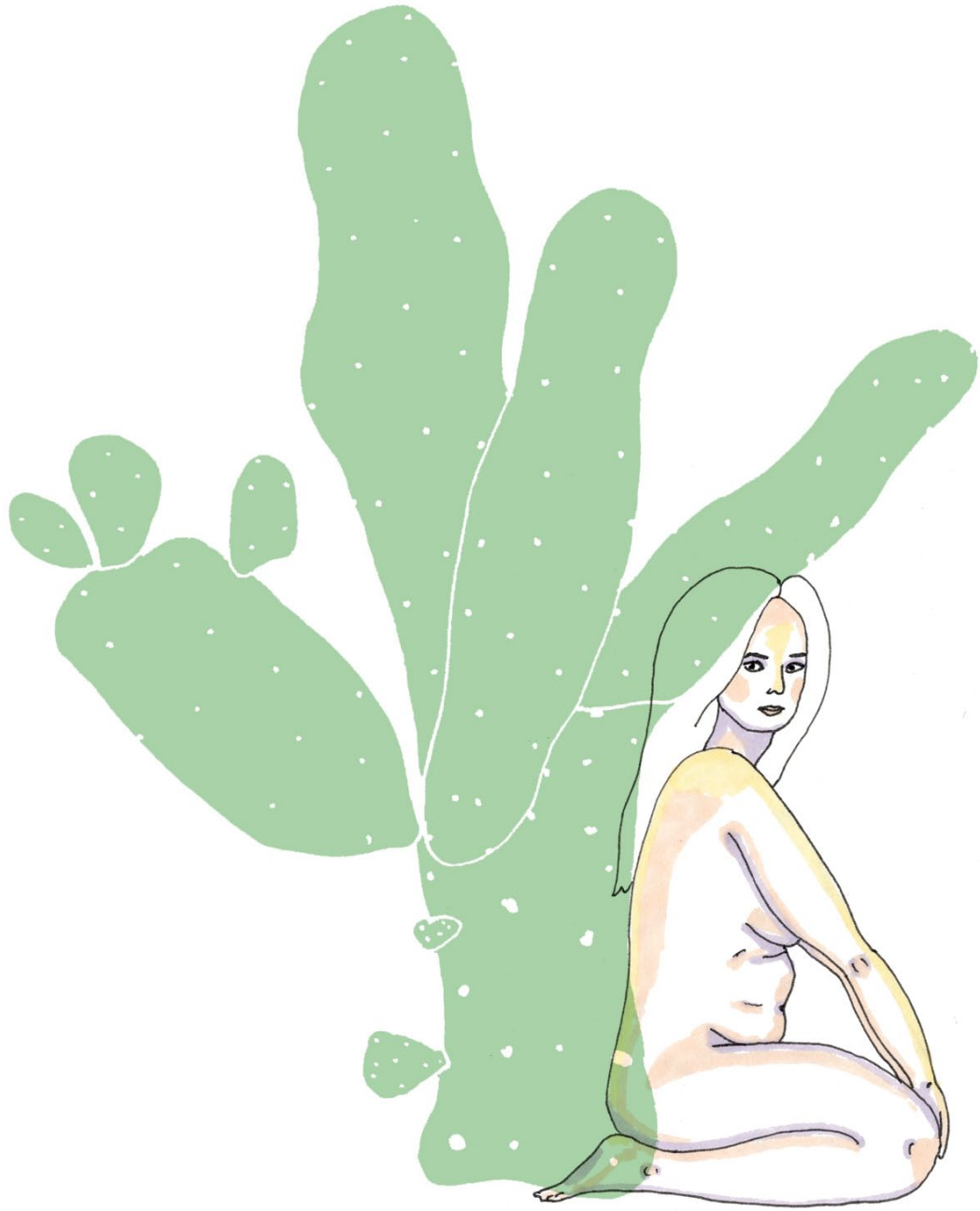
Swansea College of Art (UWTSD)

Emily Taylor is an illustrator and designer currently based in South Wales and a recent graduate of the BA (Hons) Illustration course at Swansea College of Art UWTSD. She works primarily with fine-liners, pro-markers and pencil with Photoshop for editing and finishing her work.

The work is largely based around observations of life, daily drawings of objects and people or focusing on certain issues and questions within our culture. A perfectionist trying hard to scribble her way into a messy realm; where work can take new forms and directions.

Darluniwr a dylunwr wedi ei selio yn Ne Cymru a graddedigwr diweddar cwrs BA (Anrh) Darlunio yng Ngholeg Celf Abertawe, PCYDDS yw Emily Taylor. Gweithia gan amlaf gyda fine-liners, pro-markers a phensil gyda Photoshop i olygu a gorffen ei gwaith.

Mae ei gwaith wedi ei selio ar sylwadaeth o fywyd, darluniau dyddiol o wrthrychau a phobl neu ffocysu ar bynciau a chwestiynau penodol o fewn ein diwylliant. Yn ymdrechu at berffeithrwydd trwy sgriblo'i ffordd i fyd anniben; lle gall gwaith gymryd ffurfiau a chyfeiriad gwahanol.





SAMPADA GURUNG

Falmouth University

Sampada Gurung is a Nepalese born and a British based illustrator. A recent graduate of the BA (Hons) Illustration degree from Falmouth University. Her illustrations visually express the mind's eye from narrative text, through surreal human form and symbolism.

Concepts surrounding psychological tendency and pieces describing Emotional atmosphere are explored. Dream-like imagery is captured by using both traditional and digital methods, with a subtle colour and texture palette.

Darluniwr Nepaledig wedi ei selio ym Mhrydain yw Sampada Gurung. Graddedigwr diweddar gwrs BA (Anrh) Darlunio o Brifysgol Falmouth. Mae ei darluniau yn cyfleu'n weledol llygad y meddwl o lenyddiaeth, trwy ffurf ddynol a symbolaeth.

Archwilia cyd-destunau sydd yn delio gyda thueddiadau seicolegol a darnau sy'n disgrifio atmosffer teimladol. Dalier delweddau breuddwydiol gan ddefnyddio ffyrdd traddodiadol a digidol, gyda phalet lliw a gwead craff.





NAOMI MITCHELL

Swansea College of Art (UWTSD)

Naomi Mitchell is a recent BA (Hons) Illustration graduate from the Swansea College of Art UWTSD. From a young age she has always enjoyed drawing people and her work still centres around the same subject matter. Predominantly using watercolour and biro pen her combination of delicate line work and heavy shading capture those quintessential qualities that distinguishes one human face from another. 'People and their Possessions' explores how the possessions we own and the clothes we wear can become a part of who we are. In consideration to this Naomi has created four fictional characters that together make up the quirky and dysfunctional family – The Woodberry's. Paired with a page of their favourite possessions, each character's belongings give an insight into their likes and interests. Perhaps building a personality behind the portrait and making these imagined characters more believable.

Graddedigwr diweddar gwrs BA (Anrh) Darlunio o Goleg Celf Abertawe, PCYDDS yw Naomi Mitchell. Ers yn ifanc mae wedi mwynhau arlunio pobl ac mae ei gwaith o hyd yn trin y pwnc yma. Gan ddefnyddio dyfrlliw a beiro mae ei chyfuniad o waith llinell fanwl a chysgodi trwm yn dal nodweddion pur sydd yn darnodi un wyneb dynol o un arall. Archwilia 'People and their Possessions' fel mae'r eiddo rydym ni'n eu perchen a'r dillad gwisgwn yn dod yn rhan o beth ydym ni. O achos hyn mae Naomi wedi creu pedwar cymeriad ffug sydd gyda'i gilydd yn creu teulu'r Woodberry. Wedi eu partneri gyda thudalen o'u hoff eiddo, mae eiddo pob cymeriad yn rhoi mewnwleadiad i'w hoffter a diddordebau. Efallai'n adeiladu personoliaeth i bob portread a gwneud y cymeriadau dychmygol yma yn fwy credadwy.



IRIS WHITE
WOODBERRY.





JOSH PATTERSON

Birmingham City University

Josh is an award-winning Freelance Illustrator and a graduate from Birmingham City University with a First Class degree in Visual Communication (Illustration). He is currently based in London and has worked on a diverse range of projects including movie posters, album covers, editorial and children's books. The majority of his work is highly conceptual and editorial based, which allows him the freedom to express abstract and contemporary thinking. However, he is a versatile illustrator and enjoys exploring and experimenting with other areas in the field.

Darluniwr gwobrwyedig a graddedigwr Gradd Dosbarth Cyntaf yng Nghyfathrebu Gweledol (Darlunio) o Brifysgol Dinas Birmingham yw Josh. Nawr wedi ei selio yn Llundain gweithia ar amrywiaeth o brosiectau gan gynnwys posterï ffilm, cloriau albwm, gwaith golygyddol a llyfrau plant. Mae ei waith gan amlaf yn gyd-destunol a golygyddol, sydd yn galluogi rhyddid i ddatgan meddwl abstract a chyfoes. Fodd bynnag, mae'n ddarluniwr dawnus sydd yn mwynhau archwilio ac arbrofi gyda darnau eraill o fewn y maes.





MICAH SHAW

Plymouth College of Art

Micah Shaw is an illustrator and comic book artist based in the UK who hopes to tell a story within her illustrations. Her visual language is inspired by her life, humour and imagination. She uses a mix of traditional pen and paper then digitally renders them on Photoshop or Illustrator. This series of illustrations portray the collective group of a variety of nouns; the chosen nouns are based on the nostalgic memories of her childhood and reflect the diverse cultures which she has been exposed to.

Darluniwr ac artist llyfrau comic wedi ei selio yn y DU yw Micah Shaw sydd yn gobeithio adrodd stori o fewn ei darluniau. Ysbrydolir ei iaith gweledol ar ei bywyd, hiwmor a dychmyg. Defnyddia cymysgedd o ben a phapur traddodiadol yna 'u haddasu'n ddigidol ar Photoshop neu Illustrator. Mae'r cyfres o ddarluniau yma yn cyfleu grŵp lluosog o enwau; yr enwau dewisedig wedi eu selio ar atgofion hiraethus ei phlentyndod a chyfleu'r diwylliannau amrywiol mae wedi eu profi.





RACHEL WILLIAMS

Swansea College of Art (UWTSD)

A recent graduate of Photography at the Swansea College of Art, UWTSD, Rachel's work is soft and dream-like, evoking feelings of denial and confusion in the event of an inexplicable loss. Although the work is derived from a traumatic experience, the artist is drawn to the simplistic beauty and banality of everyday life. It is an act of taking these unexplainable feelings and transforming them into a visual language.

Graddedigwr diweddar Ffotograffiaeth Coleg Celf Abertawe, PCYDDS, mae gwaith Rachel yn freuddwydiol, gan ein hatgoffa o deimladau o wadi ac anghymhendod o ganlyniad i golled anesboniadwy. Er bod y gwaith wedi deillio o brofiad trawmatig, mae'r artist yn cael ei atynnu tuag at brydferthwch syml a chyffredinedd bywyd pob dydd. Yr act o gymryd y teimladau anesboniadwy yma a'u trawsffurfio i iaith weledol.





Mission Gallery is one of Wales' best adapted spaces for the contemporary arts.

Mission Gallery has developed a reputation for dynamic and distinctive programming, to present excellence across the visual arts, applied arts and craft, from across Wales and beyond.

I fagu datblygiant ac i gwthio ffiniau celf gweledol a chelf cymhwysol.

Un o safleoedd gorau Cymru am gelf gyfoes yw Oriel Mission. Mae'r Oriel wedi datblygu enw da am rhaglen deinamig a gwahanredol, i gyflwyno arbennigrwydd ar draws y byd celf gweledol, cymhwysol a chrefft, o Gymru ac ymhellach.



Cyngor Celfyddydau Cymru
Arts Council of Wales



Noddir gan
Igweddau Cymru
Sponsored by
Welsh Government



Supported by
The National Lottery
through the Arts Council of Wales



Cefnogwyd gan
Y Loteri Genedlaethol
trwy Gyngor Celfyddydau Cymru